



**SMÅDAL
MEKANISKE**

Reparasjoner og serviceoppdrag for fiske-, kyst- & offshore-flåten samt landindustri

Mackerel Fishing System

1.1 General Information

Most of the fishing vessels (with trolling line) along the Norwegian Coast are using this system to fish mackerel. It has been developed in close co-operation with the fishermen since the first delivery in 1995.

Increased efficiency and reduced human contact are some of the advantages.

The system is made of aluminium conveyor chutes which is very strong, light in weight, resistant to corrosion and hygienic (smooth surface easy to clean). This including "Fish receivers" made of stainless steel.

1.2 Pictures to illustrate the equipment used



Picture 1 "Fish receiver" which unhooks the fish from the line



Picture 2 Example of 30ft fishing vessel rigged up with a standard aft system

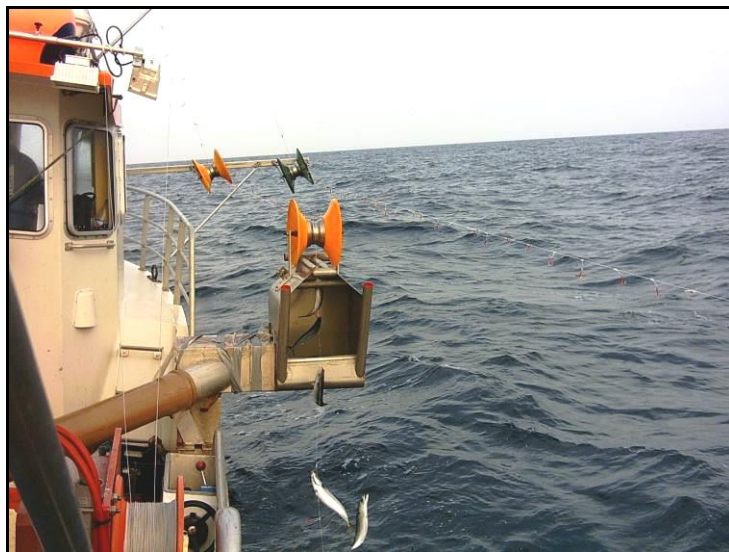


(3 “fish receivers”)

As seen on Picture 2 a white line is marked to indicate where the fishing line goes.



Picture 3 Mackerel system ashore with 5 lines (stbd/port forw. incl 3 aft)



Picture 4 Fishing with stbd. forward receiver

On the two forward “fish receivers” (picture 4) stbd/port side, an approx. 1mtr conveyor chute is normally used.



Picture 5 Standard system aft with 3 receivers on conveyor chute, rollers and a tract in the middle

The white lines indicate the breadth (marked with an arrow) of the system “folded up” which is built after measurements of each vessel. Outwards of the breadth it is hinged to tilt the system up on both sides when not in use.



Picture 6 Aft system ashore stbd. side

1.3 Basic delivery

For 3 fishing lines:

- Standard system aft (picture 5)
- Including in total 9 “fish rollers” (orange “wheels”)

1.4 Extended delivery

For each fishline (this depending on the size of vessel):

- Stbd. forward fish receiver including 3 rollers and conveyor chute
- Port forward fish receiver including 3 rollers and conveyor chute