



# Anglevinsj



## ***Smådal Mekaniske 'Anglevinsj' fishhook winch for jigging fishing.***

*Customized to optimize working conditions on board. Customer to advice dimensions.*

*To be delivered with 12V or 24V hydraulic aggregate. If existing hydraulic pump to be used, central with flow control up to 20 l/min to be delivered. Please advise length of hydraulic hose needed.*

*Combined with easy to install container.*

### ***Benefits experienced:***

- *Easy to use*
- *Streamline work*
- *Ease on shoulders and arms wear and tear.*



©2011 Smådal Mekaniske

N-6094 Leinøy

Tlf +4770086690 Fax+4770086512

Mob+4797716840

post@smamek.no

www.smaadalmek.no

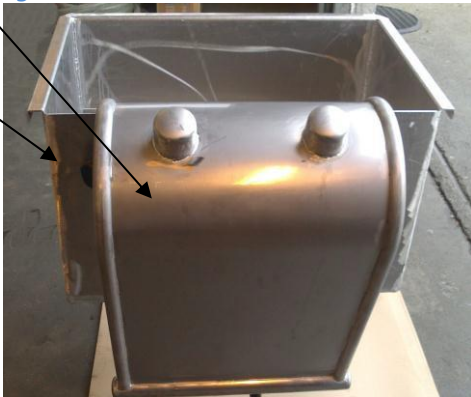


**SMÅDAL  
MEKANISKE**

**Dimensions:**

Container: L,B,D=800 x 500 x 475mm.  
Weight 18 kg.

Slipp: H 750mm, B 550mm. Weight 14 kg.



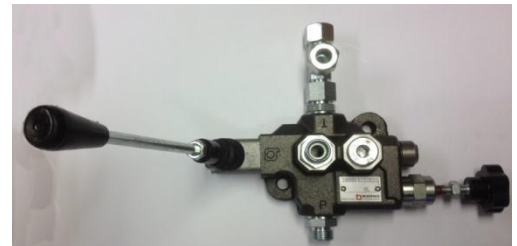
**Specification hydraulic aggregate**

Power cons 12V: 9 Ampere free motion.  
23 Ampere with load.

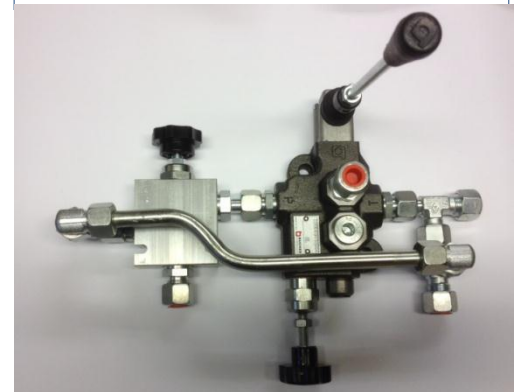
Power cons 24V: 4 Ampere free motion.  
12 Ampere with load.

RPM ~ 80

Dimensions: L,B,D= 500 x 180 x 180mm.



Central with pressure relief without speed contr.



Central with speed control valve



12-24 V hydraulic aggregate

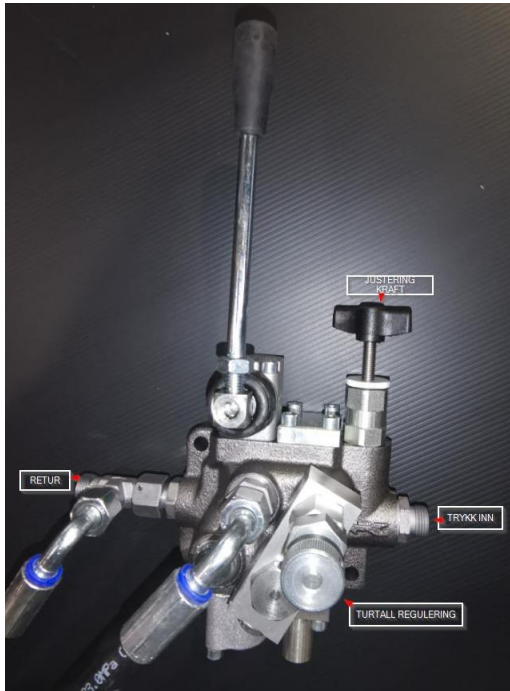
«This specification is based on the details of the design standard specification which is provided without guarantee and may be subject to individual adjustments»



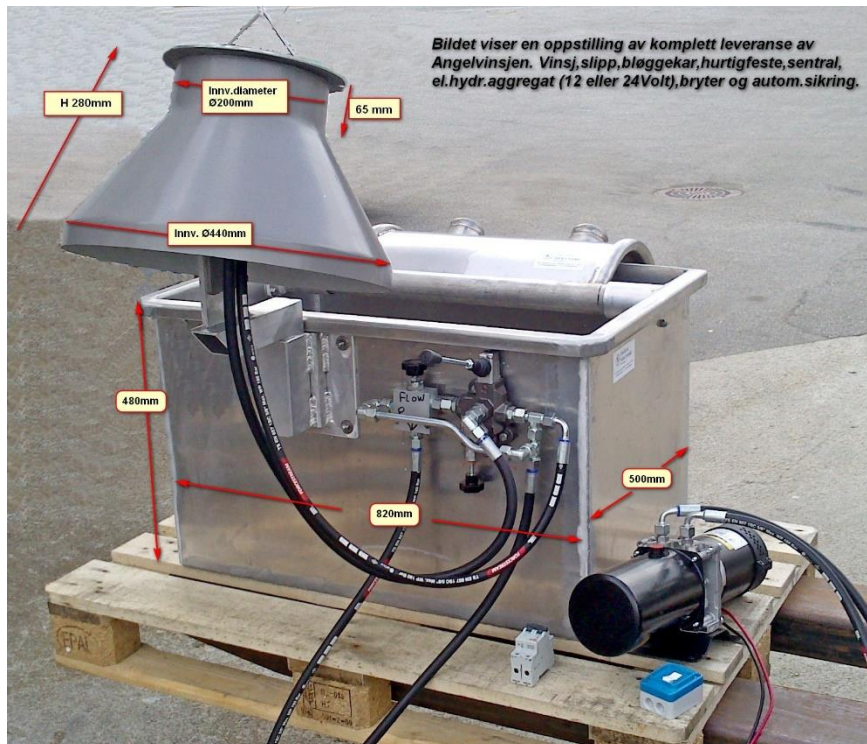
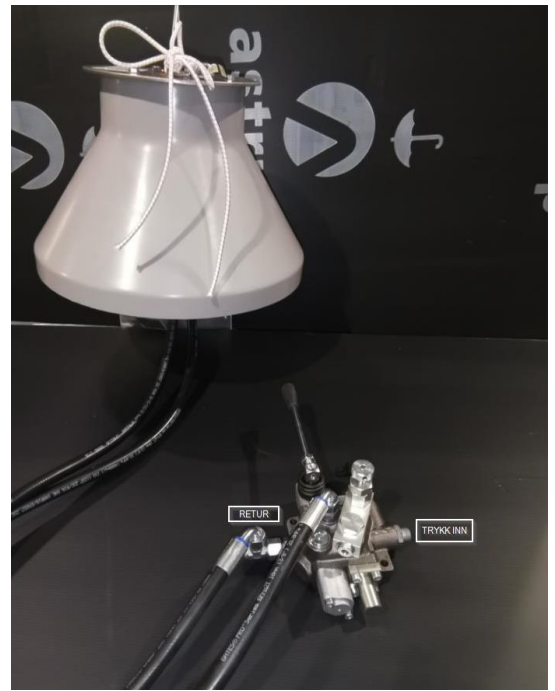
**SMÅDAL  
MEKANISKE**

Reparasjoner og serviceoppdrag for fiske-, kyst- & offshore-flåten samt landindustri

### Central w. speed control



### Anglevinsj pressure in / return



«This specification is based on the details of the design standard specification which is provided without guarantee and may be subject to individual adjustments»